

EXCLUSIVE 3 BHK RESIDENCES



KATRAJ - KONDHWA ROAD

*Let life bloom here*



Raj Housing Corporation



Turn life to a brighter way



Katraj - Kondhwa Road is a blooming location in Pune. Located on the main road, Kamal Villa II has excellent connectivity. Very near to Shatrunjay Jain Temple, the central city markets, educational centres, shopping markets, Mumbai expressway are well accessible by wide roads.

Raj Developers brings you 3 BHK exclusively crafted homes with specifications for a better lifestyle.

Go ahead for a brighter way of life !





## EXTERNAL SPECIFICATIONS

Structural

- Lab tested concrete for RCC Structure
- Masonry in energy saving light weight blocks
- Single coat plaster finish
- Earthquake resistant building design

Security

- CCTV surveillance system
- Security guard cabin
- Video Door Phone to every flat

Lift & Backup

- Two lifts with separate back-up system
- Car lift system with separate back-up
- Back-up for common area lighting

Paint

- Water resistant exterior paint

Fire Security

- PMC approved fire fighting equipment
- Fire refuge area
- Flame retardant electrical wiring

Other

- PMC water connectivity
- Provision for borewell
- Overhead and underground water storage tanks
- Solar water heater system
- Rain water harvesting system
- Letter Box





3D sectional view  
Flat 101

INTERNAL  
SPECIFICATIONS

Living Room

Vitrified tiles flooring  
TV, Telephone & AC points

Master Bedrooms 1 & 2

Vitrified tiles flooring  
Laminated door  
Aluminium sliding window  
Granite sill to window  
TV & AC points

Master Toilets 1 & 2

Anti skid ceramic tiles flooring  
Designer wall tiles upto lintel level  
Solar hot water connection in toilet 1  
Jaquar or equivalent chrome fittings  
Wash basin  
Western Commode with flush tank  
Exhaust fan point

Other Bedroom

Vitrified tiles flooring  
Laminated door  
Aluminium sliding window  
Granite sill to window

Common Toilet

Anti skid ceramic tiles flooring  
Designer wall tiles upto lintel level  
Solar hot water connection  
Jaquar or equivalent chrome fittings  
Western Commode with flush tank  
Exhaust fan point





3D sectional view  
Flat 201



# INTERNAL SPECIFICATIONS

## Kitchen

- Vitrified tiles flooring
- Granite platform with SS sink
- Glazed tiles 4' dado above platform
- Water purifier point
- Exhaust fan point
- Refrigerator point
- Attached dry terrace

## Terraces

- Anti-skid ceramic tiles flooring
- MS railings
- Washing machine point in dry terrace

## Electrical

- Anti-skid ceramic tiles flooring
- MS railings
- Washing machine point in dry terrace

## Other

- Video door phone
- Safety grill & mosquito net to windows
- Oil bound distemper paint internally



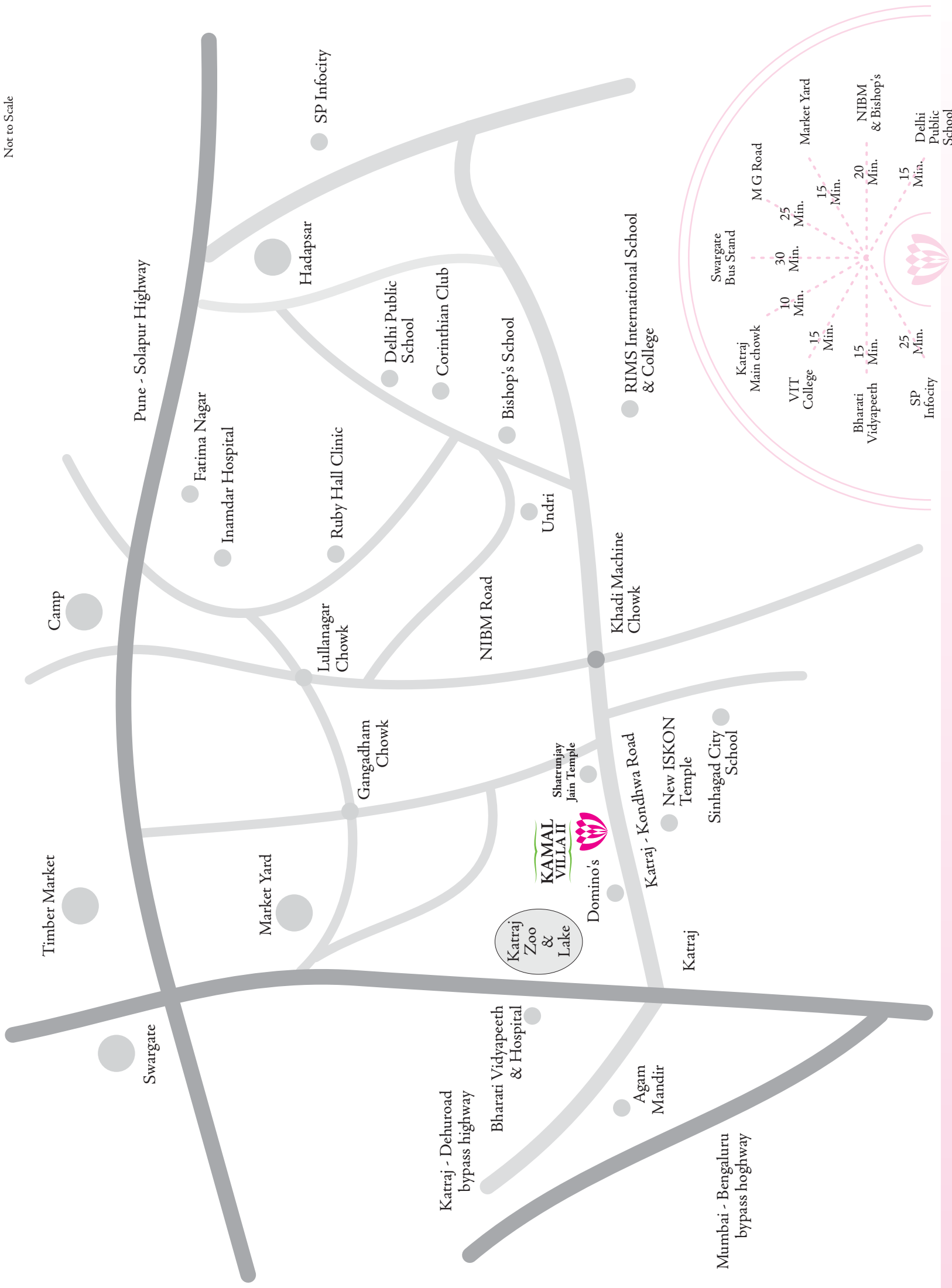


3D sectional view  
Floor Lounge



# LOCATION MAP

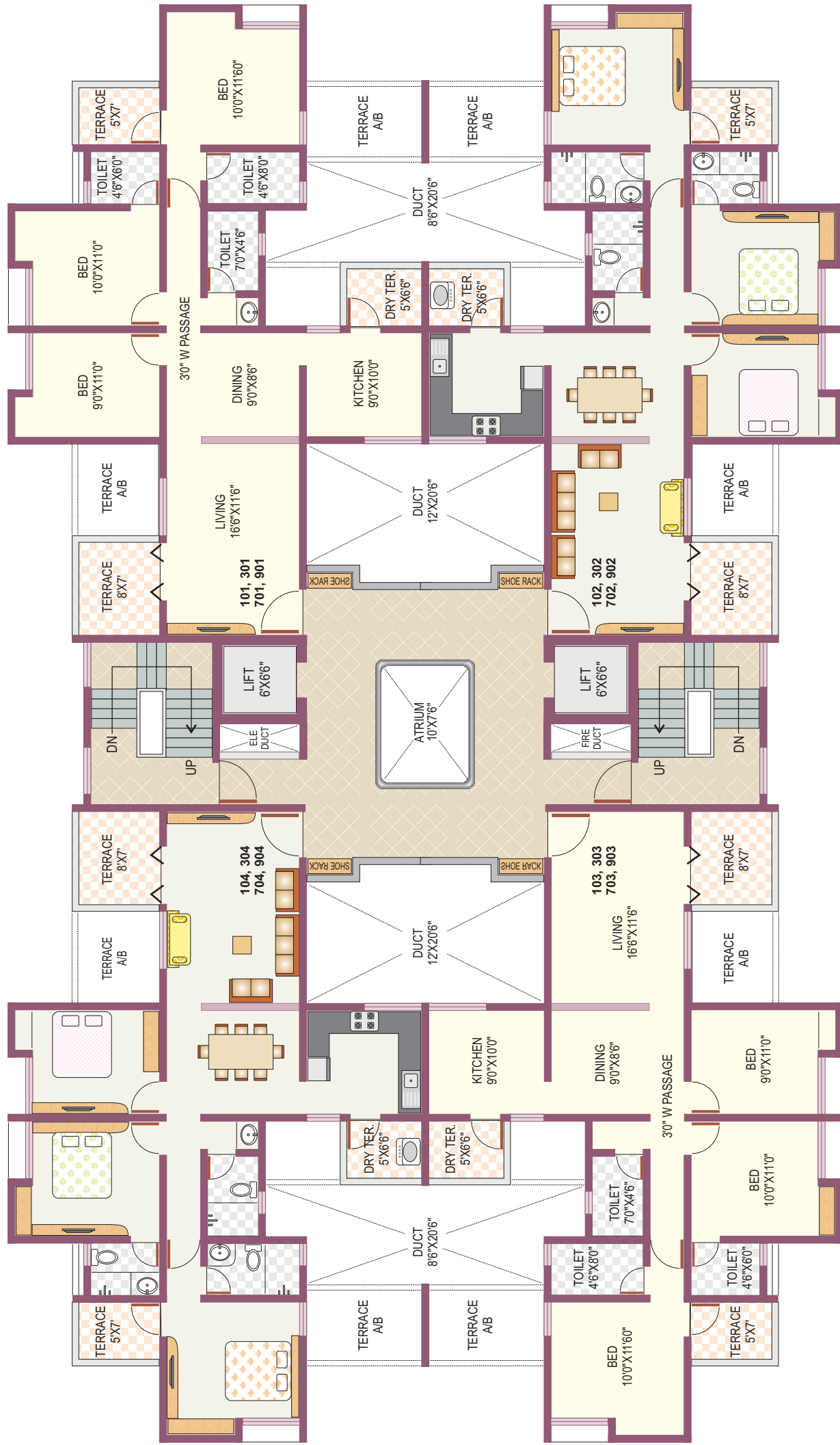
Not to Scale







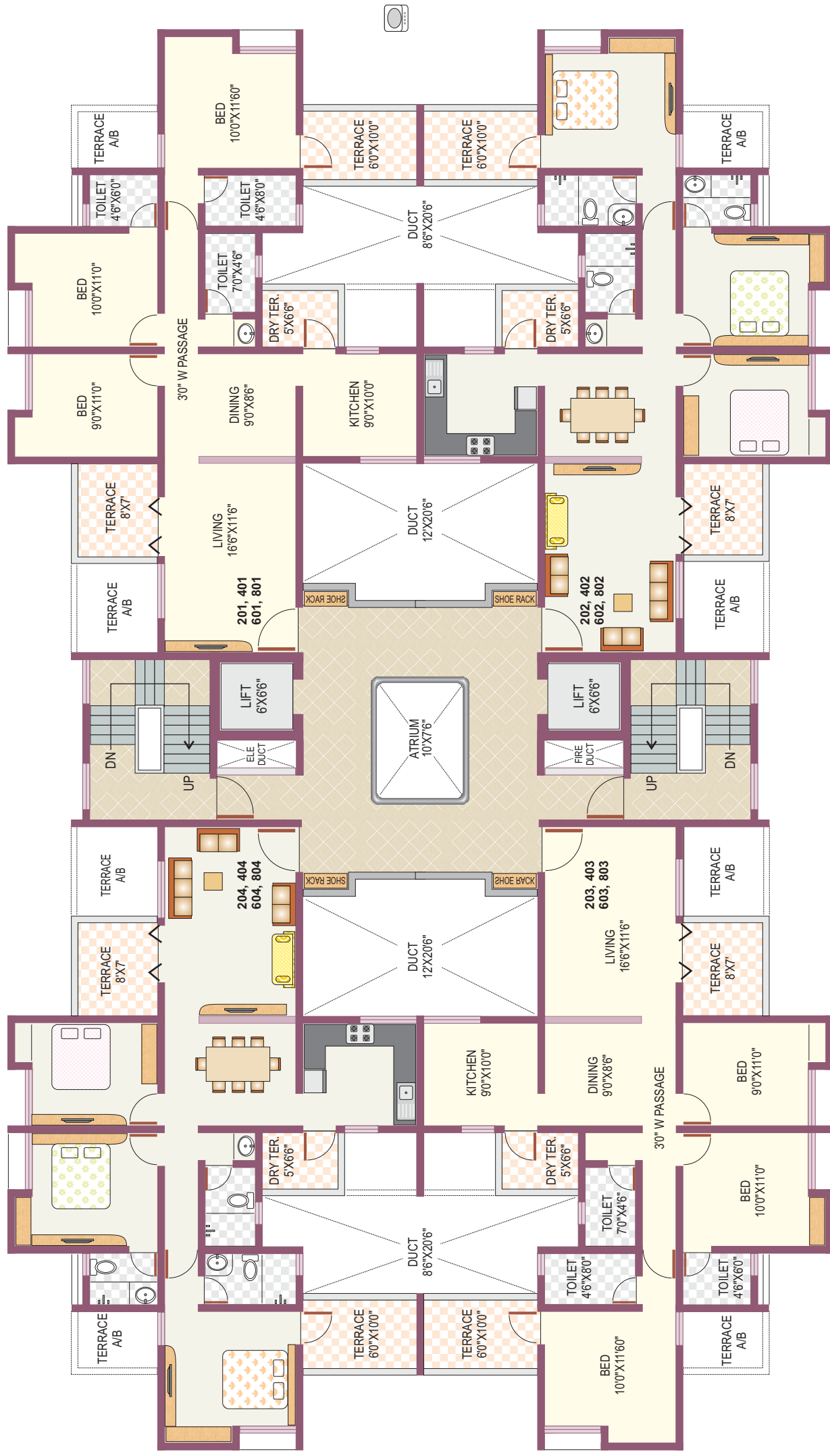
# Typical 1st, 3rd, 5th, 7th, 9th Floor Plan



FLAT NO.	CARPET		TERRACE		SALEABLE	
	Sq. Mtr.	Sq. Ft.	Sq. Mtr.	Sq. Ft.	Sq. Mtr.	Sq. Ft.
1, 2, 3, 4 on all floors	81.57	878.00	11.43	123.00	125.51	1351.00

Dimensions in sq. ft. are for reference only

# Typical 2nd, 4th, 6th, 8th Floor Plan



FLAT NO.	CARPET		TERRACE		SALEABLE	
	Sq. Mtr.	Sq. Ft.	Sq. Mtr.	Sq. Ft.	Sq. Mtr.	Sq. Ft.
1, 2, 3, 4 on all floors	81.57	878.00	13.75	148.00	128.67	1385.00

Dimensions in sq. ft. are for reference only



CALL FOR BOOKINGS  
**9225530567**



## Raj Housing Corporation

Office : Paras Chambers, 2nd Floor, Near Laxminarayan Talkies, Parvati, Pune - 411009.  
Tel : 020 24427178. E-mail : [rajhousing@vsnl.net](mailto:rajhousing@vsnl.net)

This brochure is conceptual. This is not a legal offering nor a part of the agreement. The developers reserve the right to change or modify the plan, elevation, number of floors, specifications, amenities, colour schemes etc.